



GOVERNMENT COLLEGE OF ENGINEERING, JALGAON

(An Autonomous Institute of Government of Maharashtra)

National Highway No.6, JALGAON – 425 002

Phone No.: 0257-2281522

Website : www.gcoe.ac.in

Fax No.: 0257-2281319

E-mail : princoe@rediffmail.com



Name of Examination : **Winter 2020** - (Preview)

Course Code & Course Name : **CE401 - Estimating and Costing**

Generated At : **19-04-2022 11:07:52**

Maximum Marks : **60**

Duration : **3 Hrs**

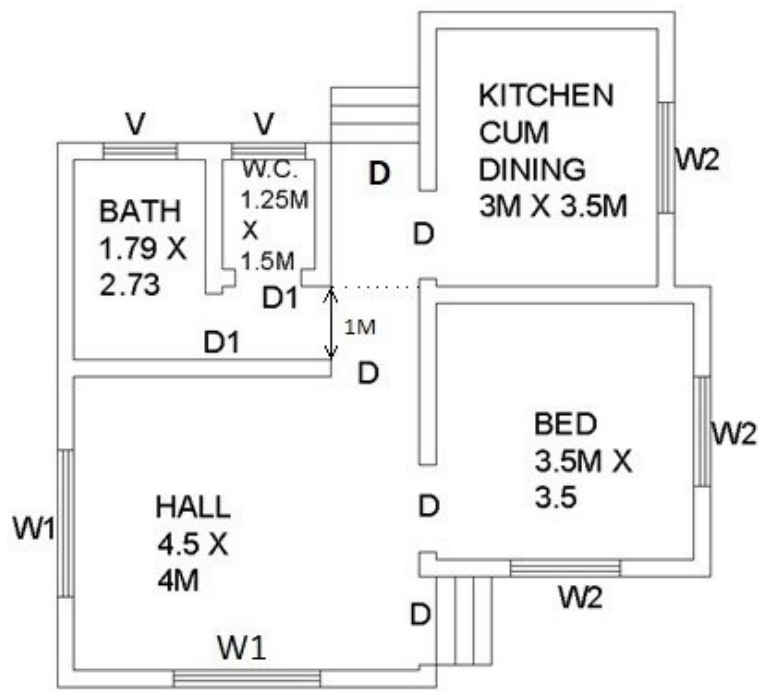
[Edit](#) [Print](#) [View Answer Key](#) [Close](#) **Answer Key Submission Type:** Marking scheme with model answers and solutions of numerical

Instructions:

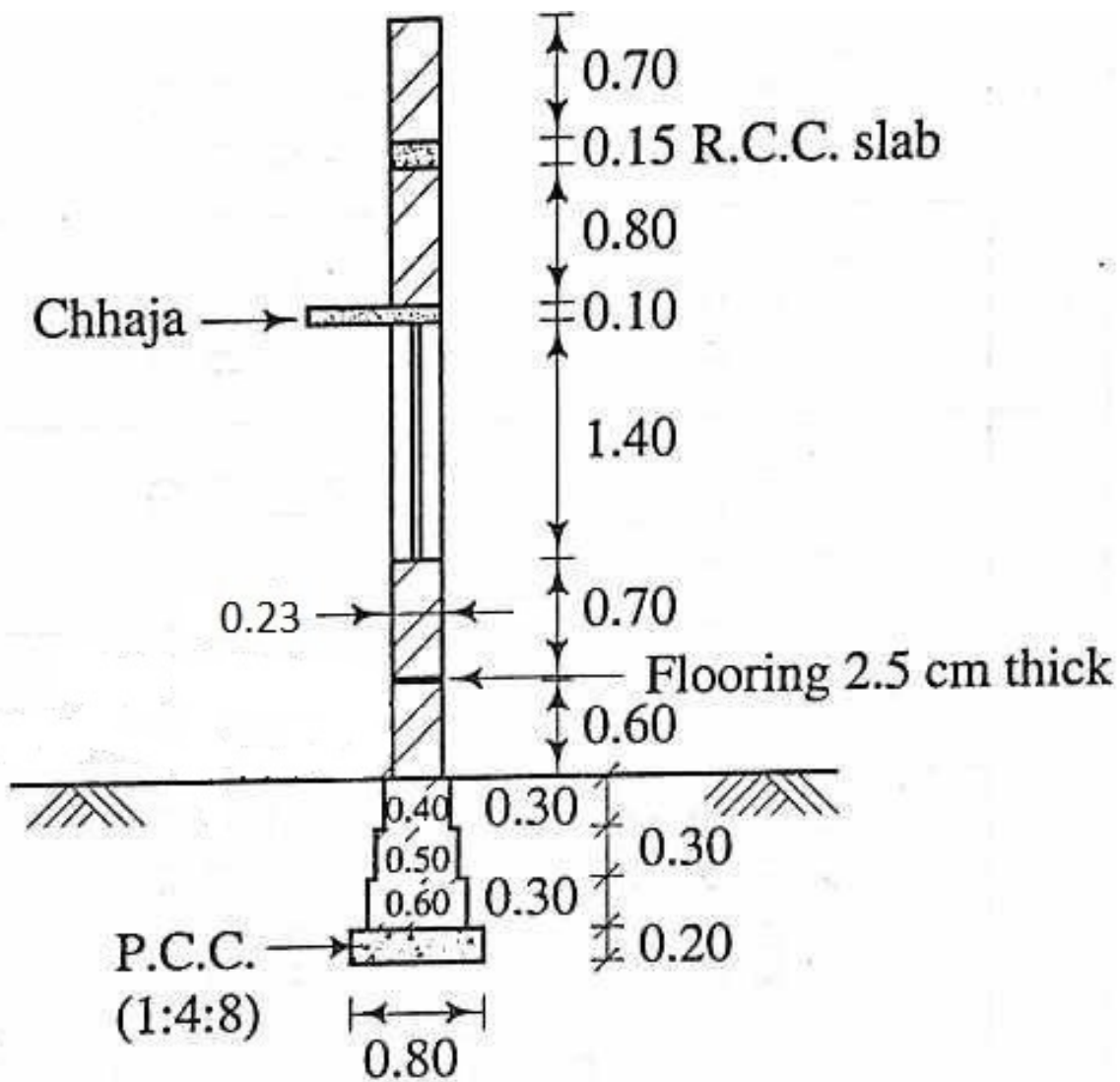
1. All questions are compulsory.
2. Illustrate your answer with suitable figures/sketches wherever necessary.
3. Assume suitable additional data; if required.
4. Use of logarithmic table, drawing instruments and non programmable calculators is allowed.
5. Figures to the right indicate full marks.

1) Attemp any one of following.

- | | | |
|---------|--|------|
| A)) | What are the different methods of taking out quantities? Explain each in detail | [12] |
| B)) i). | What are the different types Approximate estimate? Explain any one detail. | [6] |
| | II). Describe the procedure of preparation of approximate estimate of road work. | [6] |
| 2) A)) | Enlist the various methods of depreciation, Explain any one in detail | [6] |
| B)) | What do you mean by Task? What are the different factors affecting on task explain in detail. | [6] |
| 3) A)) | What are the rule for the deduction of brick works, plastering & painting? Describe in detail. | [6] |
| B)) | Differentiate between Market value and Book value | [6] |
| | Or | |
| | Differentiate between Scrap value and Salvage value | |
| 4) A)) | Prepare analysis of rates of first class brick masonry in Cm (1:4) in super structure | [6] |
| B)) | Draft the detail Specification of R.C.C. work 1:1½ :3 | [6] |
| 5) | Fig.1 shows a plan of a small building and S/C of wall calculate the Quantities of the following item and enter them in standard measurement sheet | |
| A)) | R.R. Masonry in foundation & C.R. masonry in plinth in C.M. (1 : 6) | [6] |
| B)) | First class Brickwork in superstructure in C.M. (1 : 6) | [6] |



PLAN



S/C THROUGH WALL

OPENING DETAIL

D= 1M X 2.1M

D1= 0.9M X 2.1M

W1= 1.5M X 1.4M

W2= 1.2M X 1.4 M

V 0.6M X 0.6M

Auto Generated by SsOES v6.2
